

INSTRUMENT  
APPROACH  
CHART - ICAO

ILS  
LLZ 108.1  
IAL  
GP 334.7  
CH 18X

AERODROME ELEV 2238 FT  
HEIGHTS RELATED TO  
THR RWY 23L - ELEV 2236 FT

ALMATY APPROACH 118.3  
ALMATY RADAR 126.8  
ALMATY TOWER 119.4  
ALMATY ATIS (EN) 129.8  
ALMATY ATIS (RU) 135.1

ALMATY  
ILS/DME Y CAT II & III  
RWY 23L

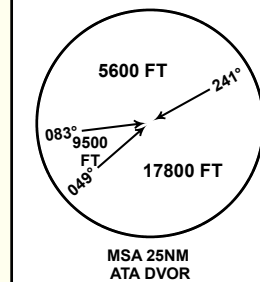
DIST IN NM  
ALT, ELEV IN FT  
BRG ARE MAGNETIC  
VAR 5°E

WARNING:

1. Radio interference may arise during ILS and VOR approaches of ACFT, equipped with ILS and VOR receivers which do not meet the requirement on protection against FM broadcasting stations.

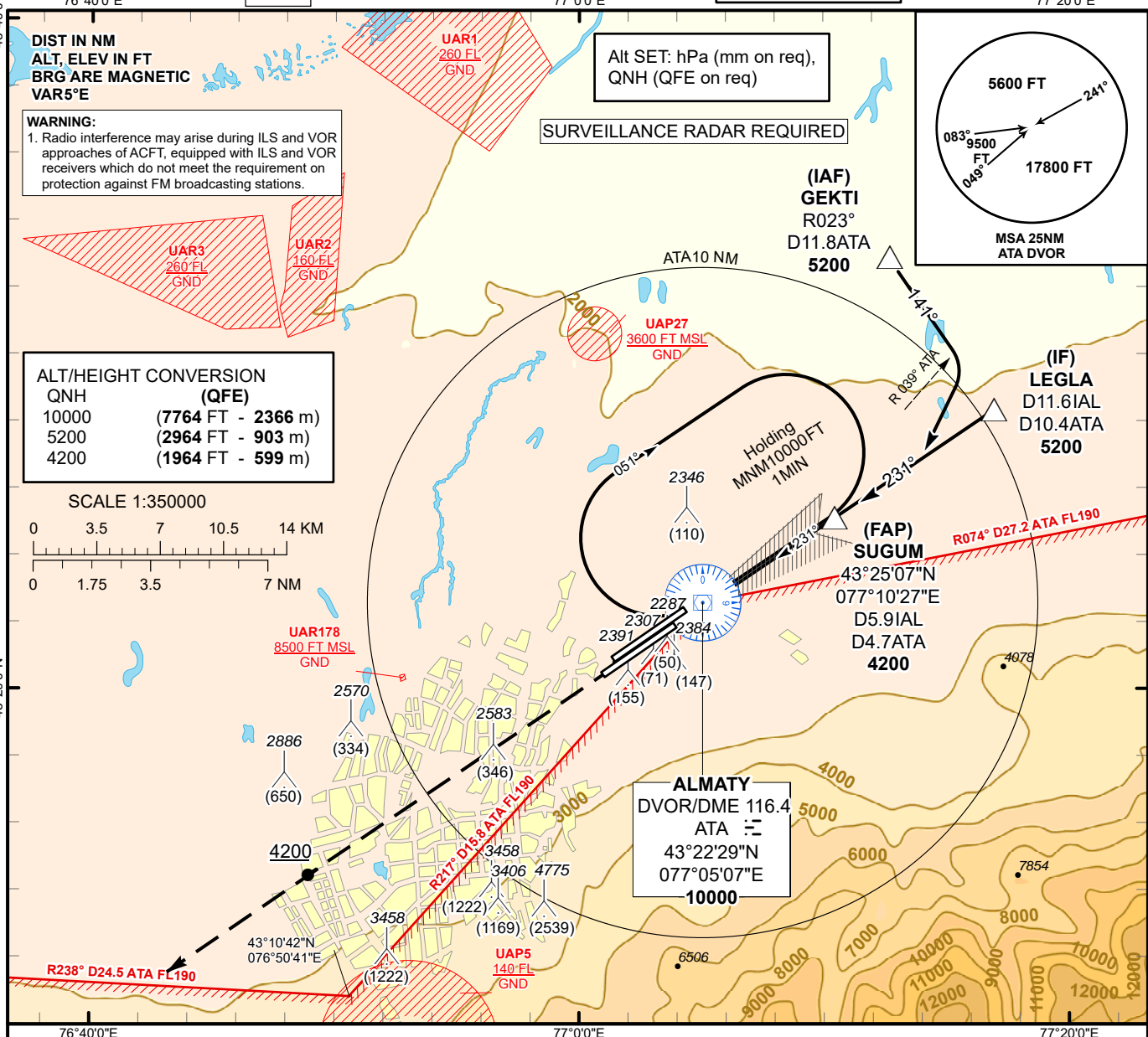
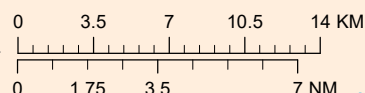
Alt SET: hPa (mm on req),  
QNH (QFE on req)

SURVEILLANCE RADAR REQUIRED



ALT/HEIGHT CONVERSION	QNH	(QFE)
	10000	(7764 FT - 2366 m)
	5200	(2964 FT - 903 m)
	4200	(1964 FT - 599 m)

SCALE 1:350000



MISSED APPROACH

Climb on track 231° to 5200.  
After passing 4200 radar vectoring  
will be provided.

RADIO FAILURE:

In case of RCF climb on track 231°  
to 5200 FT, turn RIGHT to ATA,  
but not earlier than 6.5NM ATA.  
Climb to 10000FT (not below) to ATA  
and join to holding pattern.

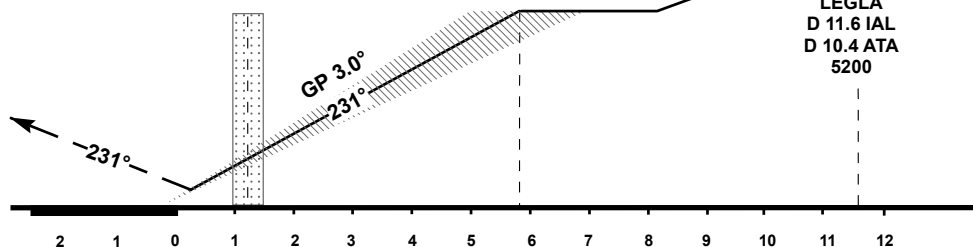
TRANSITION ALT  
10000

DVOR/  
DME  
ATA

FAP  
SUGUM  
D 5.9 IAL  
D 4.7 ATA  
4200

IF  
LEGLA  
D 11.6 IAL  
D 10.4 ATA  
5200

ILS RDH 53  
ELEV 2236  
THR RWY 23L



Aircraft Category		A	B	C	D	DIST to THR DME IAL	NM	1	2	3	4	5	5.9
Straight-in Approach OCA/H	CAT I	2436(200)	2436(200)	2436(200)	2436(200)	DME ATA	NM	-0.2	0.8	1.8	2.8	3.8	4.7
	CAT II	2336(100)	2336(100)	2346(110)	2356(120)	ALTITUDE	FT	2608	2929	3252	3576	3903	4200
	CAT III	CAT III approved				HEIGHT	FT	372	693	1016	1340	1667	1964
						DME IAL ZERO RANGED TO THR RWY 23L							
Aerodrome Operating Minima DH ft x RVR(CMV)	CAT I												
	CAT II												
	CAT III					GS	Kt	80	100	120	140	160	180
						Desc.Rate (5.2%)	ft/min	420	530	630	740	840	950

ALMATY  
ILS/DME Y CAT II, III

AERONAUTICAL DATA TABULATION

ILS approach to RWY23L from GEKTI, LEGLA	
Fix/point	Coordinates
ATA DVOR/DME	43° 22' 29.4"N 077° 05' 07.0"E
IAL D5.9 ATA D4.7 (FAP SUGUM)	43° 25' 07.3"N 077° 10' 26.7"E
LEGLA (IF) IAL D11.6 ATA 10.4	43° 28' 25.5"N 077° 16' 54.3"E
GEKTI (IAF) R023° D11.8ATA	43° 32' 53.4"N 077° 12' 44.4"E
THR RWY 23L	43° 21' 48.52"N 077° 03' 44.44"E
IAL LOC	43° 20' 18.8"N 077° 00' 43.4"E